

**VOLVO**  
**THE 122 S**  
**SERIES**



2



4



**4<sup>+1</sup>**

Volvo runs away from the other popular priced compact cars, gets over 25 miles to the gallon (even with automatic transmission), and is virtually indestructible.

**2**


---

**Volvo 122S 2 door Sedan: 90 horsepower; automatic or manual transmission; disc brakes.**

---

**4**


---

**Volvo 122S 4 door Sedan: 90 horsepower; automatic or manual transmission; disc brakes.**

---

**4<sup>+1</sup>**


---

**Volvo 122S 4 door plus a tailgate Station Wagon: 90 horsepower; manual four speed synchromesh transmission.**

---

Volvo cars are of superior quality because of the high standards applied during the manufacturing process of all the parts and especially in the final assembly of the complete car. Volvo simply pays more attention to the workmanship and materials used in the manufacture of the cars. A proof of this is the statistical fact that Volvos in Sweden last almost twice as long as the average car on the road in the United States. Not to mention the fact that the climate here is generally less severe and the roads somewhat better.

In keeping with Volvo's policy of progressive improvement on its products, some of the new features found on the current models are: A new interior that is designed after the proven and accepted 1800 S GT coupé interior. Disc brakes on all models. Slotted wheels for even better brake cooling. Stainless hub caps. Galvanized sections of the underbody. All of these and many more improvements are consistent with the Volvo quality concept based on the continuous improvement of design, engineering, testing, manufacturing, materials control and final assembly.



Drive it like you hate it!!



Grab handle, front



Courtesy straps at the sides



Easily adjustable back support



Three-point seat belt



## The Volvo 122 S 2 door sedan

Volvo has chair height bucket seats that are almost infinitely adjustable. Turn a knob and you can change the angle of the backrest. Push a lever and you can move forward or backward. Turn a bolt, add or remove spacers under the seat and you can raise, lower or change the pitch of the seat to fit yourself. Turn screws and you can alter the support in the small of the back. ■

The seats in the 122 S Series have new insides, outsides, and in-betweens. The insides are straps of India rubber with an in-between of upholstery designed to complement the suspension system for the smoothest possible ride. The outside of the seat is a smooth, leather-like, synthetic material of absolutely first quality (Vinyl). The surface of the seat cushions and backrests are quilted for comfort and perforated for ventilation. ■

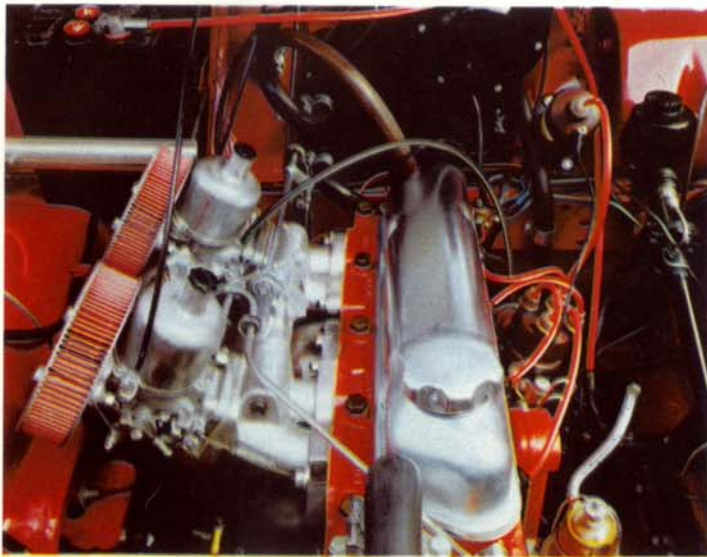
The front seats have anatomically designed cushions and backrests to keep the body of the passenger and driver firmly located even when going rapidly around a bend. The cushions are especially designed to provide good support under the back of the legs. ■

The rear seat is of the same basic construction as the front seats and is both wide and deep. A folding armrest divides it into two armchairs. ■

Volvo three point belts are included as standard equipment in these and every other model of Volvo automobiles. Rear seat belt attachments are always fitted under the back seat. ■







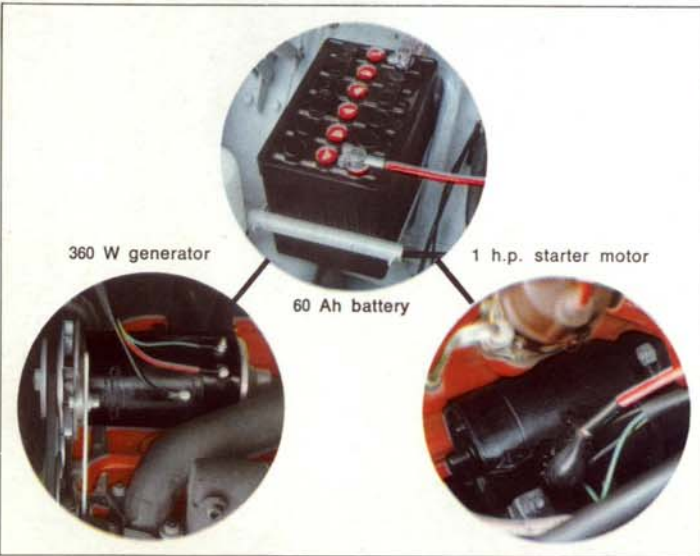
Famous Volvo B 18 D engine



Five-bearing crankshaft



Precise gear shift



360 W generator

60 Ah battery

1 h.p. starter motor



## Precision designed and built engine

A Volvo engine does not require constant tinkering and tuning. It is a simple, basic engine that is free of gimmicks and untried "advancements". As Sports Car Graphic Magazine wrote: "The project Volvo engine came off the dynamometer at the Autolite Test Facility after one of the most severe tests we have ever put a project engine through. Perhaps the foremost bit of education we acquired was learning that the Volvo B 18 engine was one of the most, it not THE most, reliable, rugged and unbreakable car engines being built today". ■

The Volvo engine has a high compression ratio, a precision designed inlet and exhaust system and fully machined combustion chambers. These insure a high degree of efficiency. They give high output, high torque and low fuel consumption; about 25 miles to the gallon, to be precise. The Volvo engine has a five bearing crankshaft, a valve mechanism designed for high speed operation, a full flow oil filter, and a unique and effective cooling system. All of which contribute to a long and dependable life. ■

The engine has high torque over a wide range of speeds permitting flexible driving without excessive gear shifting if the car is equipped with the fully synchronized manual (mechanical) transmission. ■

The twelve-volt electrical system combined with a high output generator, high capacity thinplate battery and a powerful one horsepower starter motor, mean reliable starting, always. ■









# 4

## The Volvo 122 S 4 door sedan

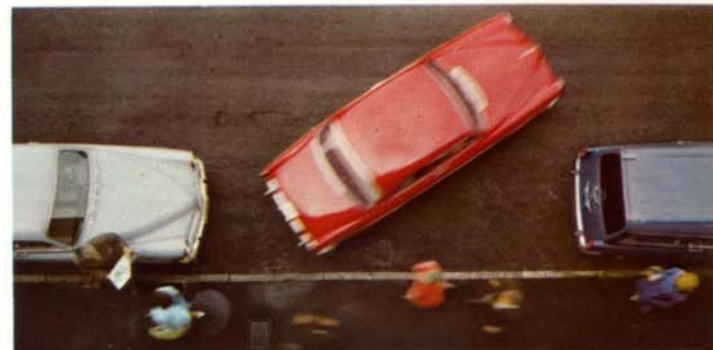
The Volvo 122 S 4 door Sedan has all the traditional comfort and convenience of 4 doors. ■

The 4 door Sedan has the same outstandingly comfortable front seats as the 2 door Sedan. The same sumptuous rear seat. ■

The instruments are grouped directly in front of the driver. The steering wheel is located at the most convenient angle for safe and comfortable steering. All the controls including the handbrake are easy to reach even when the seat belts are cinched up tight. The floor-mounted gearshift lever has very distinct positions; perfect synchronization in the mechanical transmission enables fast and safe up and down shifting. ■

**For more convenient driving — as in heavy city traffic — both the 2 door and 4 door models are available with an automatic transmission at extra cost. The Volvo automatic transmission is completely automatic — it eliminates all gear shifting. The selector lever for the automatic transmission is located on the steering column. The gear positions are clearly shown on the standard P-R-N-D-L indicator fitted directly above the steering column. ■**

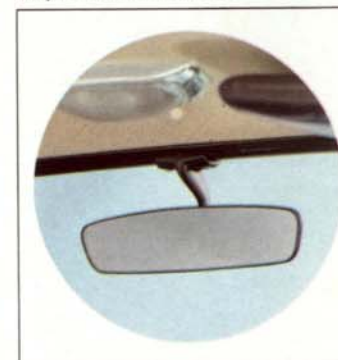
The Volvo heaters installed in the cars as sold in the United States are exactly the same as those used in Sweden to cope with the extreme of Scandinavian winters. These heaters are of the fresh air type, thermostatically controlled, providing very large quantities of warm air. There are separate controls for defroster and floor-heating systems. Air ducts to the rear floor help to distribute the heat evenly. A powerful two-speed fan is designed to increase the amount of warm or cold air as well as speed up defrosting. ■



No parking problems



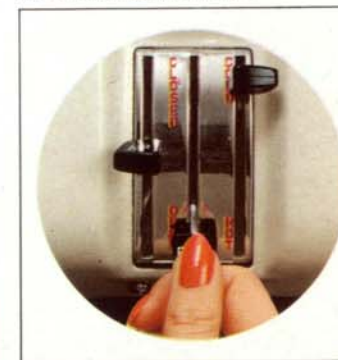
Easy-to-read instruments



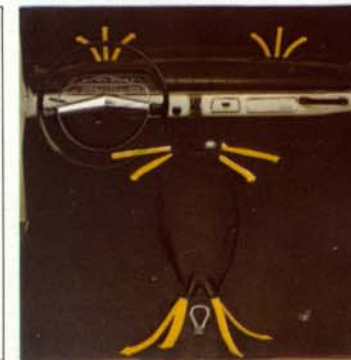
Dazzle-free rearview mirror



Easily accessible handbrake



Air and heater control



Perfect air circulation





## Roadability and handling of the highest order

Volvo Sedans have won many Sedan races all over the world. Currently, Volvo is the European Rally Champion. ■

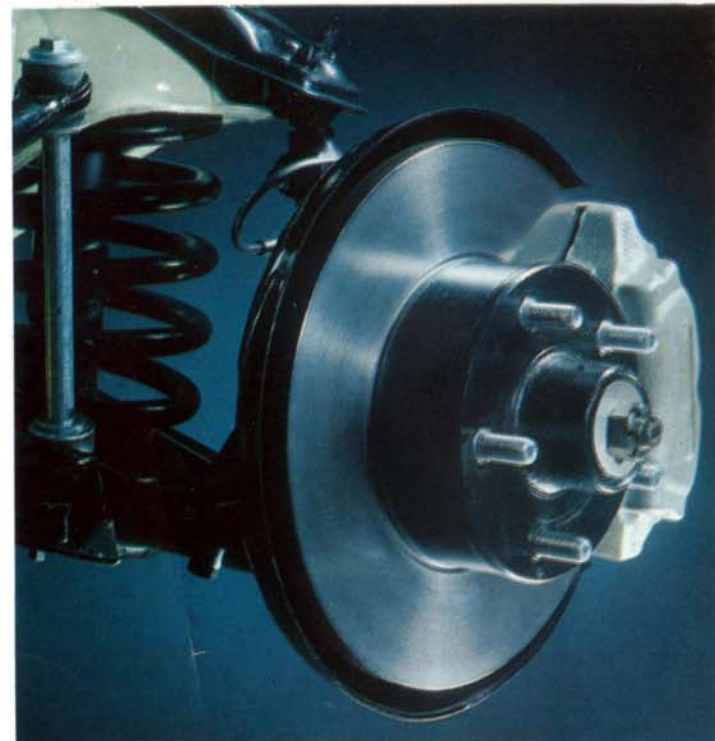
The independent front wheel suspension has double control arms journalled in rubber. Steering knuckles are carried in ball joints. A stabilizer minimizes body roll. The rear axle has two longitudinal support arms and two torque rods, all with rubber bushings. The axle is located laterally by a track rod. This seemingly simple rear axle suspension system is one of the major reasons for Volvo's race winning road-holding ability. ■

Coil springs are fitted all around acting together with telescopic shock absorbers. ■

Good braking is extremely important when racing. The Volvo disc brakes have contributed mightily to the cars' wins. The Volvo 122S Sedans and Station Wagon have disc brakes on the front wheels and large well cooled drum brakes on the rear wheels. ■

On all models the dashboard has crash padding on the upper surface and a softly rounded lower edge completely free from sharp projections. The sun visors are fitted with soft padding and are fully adjustable. The electric two-speed windshield wipers sweep most of the windshield area. ■

The luggage compartment of the Sedan models is large and well finished. It will accept a large amount of luggage. The spare tire is vertically mounted at the side so that you do not have to remove anything should you have to change tires. ■



Disc brakes front on all models



First-class rear axle suspension



Electrically operated windshield wipers



Roomy luggage compartment





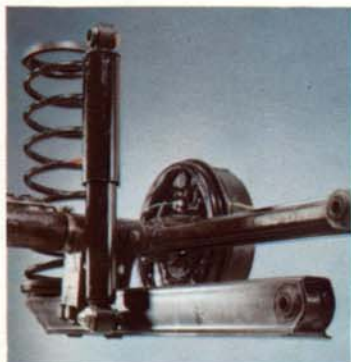
Easy-to-load Station Wagon



Large cargo space



Footstep on bumper override



Heavy-duty rear suspension

# 4<sup>+1</sup>

## The versatile 122 S station wagon

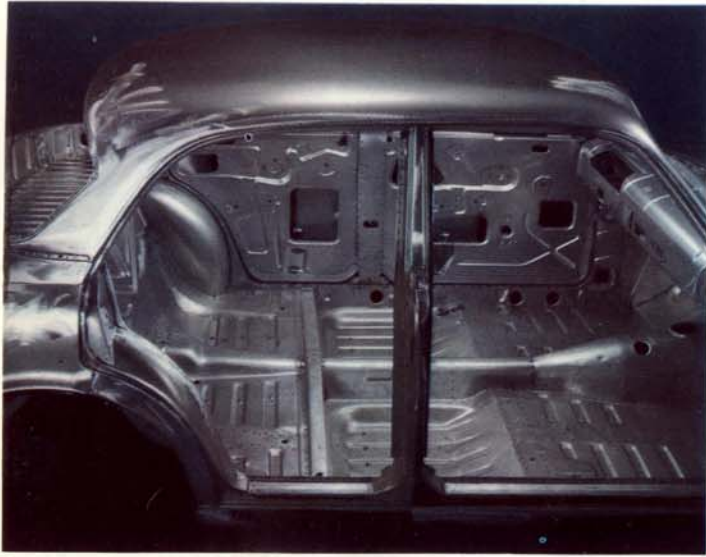
The very large, horizontally-divided rear door makes the Volvo Station Wagon an extremely easy vehicle to load and unload. It has a very large cargo capacity. To be exact, the cargo space with the rear seat folded down is just over six feet long and the width is just under four feet; the height is 31 inches. When the tailgate is open, a power mechanism operated by gas under pressure in a closed system opens the upper half of the door smoothly and easily to four alternative positions. ■

The Volvo Station Wagon includes the same comfortable front seats and fittings as in the other vehicles in the series. The cargo space is completely upholstered with a durable textile material. The rear compartment floor mat can be taken up when loading extra heavy or dirty materials which is better done on the strong steel floor. The bumper guards on the rear bumper have flat, rubber-covered top surfaces which act as a step when loading on to the roof. A roof rack is available as an optional extra from your dealer. ■

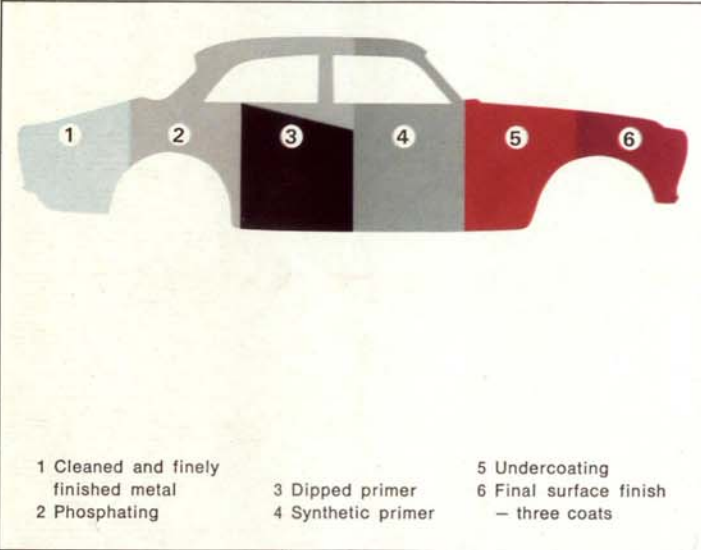
To compensate for heavy loads, the Station Wagon has stiffer rear springs, supplemented by means of hollow rubber cushions. ■







All-welded, integral steel body



Rigid check — water test



Stringent control — enamel test



## Volvo has a very strong, rust resistant body

Many people think that Volvos are made of heavier steel than other cars. It is not heavier enough to be worth bragging about. But the designer avoided flat surfaces. Volvo rounded the fenders, rounded the hood, rounded the roof, and rounded the trunk, because rounded surfaces are stronger than flat surfaces. For additional strength and safety everything is welded together — not bolted — to form a single, rigid, rattle-free unit. ■

Strength tests in laboratories have shown that the Volvo bodies stand up in stress tests **much** better than the average car body. ■

**Volvo offers the most advanced type of body construction. For instance, the door sills are made of galvanized sheet metal. This means that these supporting units will retain strength uninfluenced by rust.** ■

During the painting process, the bodies are phosphated to give the surface of the sheet metal a very slight, etched surface. This provides a better surface for the paint to adhere to. The first primer coat is applied by submerging the body. The second primer coat, intermediate color coat and the surface finish coats (three of them) are then sprayed on in several operations with hand sanding and oven drying as intermediary stages. ■

During the body assembly, anti-rust oil and undercoating compound are applied on the underbody and wheel housings. The application of these anti-rust matters dramatically increases Volvo's resistance to rust. ■





# Specifications

AB VOLVO GÖTEBORG SWEDEN



**Importers:**

**Volvo Inc.,**  
Volvo Drive, Rockleigh, New Jersey

**Swedish Motor Import, Inc.,**  
3303 West 12th Street, Houston 24, Texas

**Distributors:**

**Volvo Distributing Inc.,**  
Volvo Drive, Rockleigh, New Jersey

**Volvo Western Distributing, Inc.,**  
12925 Riverside Drive, Sherman Oaks, Calif.

**DESIGNATIONS**

**Volvo 122 S 2 and 4 door Sedan and Station Wagon.** Sedan models available with automatic transmission at extra cost. All models fitted with the Type B 18 D 90 horsepower engine and disc brakes on the front wheels.

**ENGINE**

Type B 18 D.  
Four-cylinder O.H.V. with five-bearing crankshaft.  
Oil filter of the full-flow type.  
Mechanical fuel pump.  
Water cooling thermostatically controlled.  
2 horizontal carburetors.

Bore	3.313"
Stroke	3.15"
Capacity	1.78 liters (109 cu.in.)
Compression ratio	8.5:1
Maximum output	90 h.p. (SAE) at 5,000 r.p.m.
Maximum torque	105 lb.ft. at 3,500 r.p.m.

**ELECTRICAL SYSTEM**

Voltage	12 V
Battery capacity	60 Ah
Generator output	Max. 360 W
Starter motor output	1 h.p.

**POWER TRAIN**

**Clutch** (on models with mechanical transmission)  
8 1/2" single dry-disk clutch, hydraulically operated.

**Transmissions**

**MECHANICAL TYPE M 40. FOUR-SPEED, FULLY SYNCHRONIZED.**

Reduction ratios: 1st speed	3.13:1
-----------------------------	--------

2nd speed	1.99:1
3rd speed	1.36:1
4th speed	1:1
Reverse	3.25:1

**AUTOMATIC TYPE BW-35. STANDARD P-R-N-D-L SELECTOR.**

**REAR AXLE**

Hypoid type	
Reduction ratio, cars	
With transmissions M 40 or BW-35	4.1:1
Reduction ratio, Wagon	
With transmission M 40	4.56:1

**UNDERBODY DETAILS ETC.**

**Steering gear**

Cam and roller	
Number of steering wheel turns from lock to lock	3 1/4
Turning circle, cars	approx. 34 ft.
Turning circle, Wagon	approx. 34 ft. 5 in.

**Front wheel suspension**

Independent suspension with rubber-mounted control arms. Steering knuckle carried in ball joints. Coil springs, telescopic shock absorbers and stabilizer.

**Rear axle suspension**

Rigid axle length-wise carried in two rubber-mounted support arms and two rubber-mounted torque rods. The axle is located side-wise by a track rod. Coil springs and telescopic shock absorbers. The Station Wagon has heavy-duty rear coil springs and auxiliary springs of the rubber-bush type.

**Brake system**

Hydraulic brakes.  
Handbrake operating mechanically on rear wheel drums.  
Self-adjusting disc brakes front.  
Self-centering drum brakes rear (drum diameter 9").  
Wagon has Vacuum-servo assisted brakes.

**Wheels and tires**

Pressed steel wheels. Stainless hub caps.	
Rim size, cars	4J x 15"
Rim size, Wagon	4 1/2 x 15"
Tubeless tires	
Size, cars	6.00-15"
Size Wagon	6.40-15"
Wheels and tires balanced	

**BODY**

Integral, all-welded steel body. Completely rust-proofed according to the most modern methods.

**Fuel tank**

Capacity 12 US galls.

**Instrumentation**

Speedometer, odometer and tripmeter. Fuel and water temperature gauges. Warning lamps for low charging and oil pressure. Control lamps for directional signals and main beams.

**Safety**

Volvo three-point seat belts fitted for front seats. Anchorages for rear seat belts. Padded dashboard. Padded sun visors. Grab handles.

**Other equipment**

Horn ring. Directional signal lever with automatic return.  
Fresh-air fed heater and defroster unit. Warm air supply thermostatically controlled. Separate air duct to rear compartment. Two-speed ventilation fan.  
Two-speed electrical windshield wipers. Nozzles for windshield washers.  
Dazzle-free rear view mirror. Back-up lights.  
Map reading lamp. Map pockets on front doors. Cigarette lighter. Ashtrays front and rear.  
Tool equipment including jack. Spare wheel.

**MAIN DIMENSIONS AND WEIGHTS**

	Cars	Wagon
Wheelbase	102 1/2"	
Trackfront and rear	51 3/4"	
Overall width	63 3/4"	
Overall length	175"	176 1/2"
Overall height unloaded	59 1/4"	60 1/4"
Curb weight	aprox. 2,360-2,425 lb.*	aprox. 2,640 lb.

\*) depending on model

**Rear Compartment, Wagon**

Length with rear seat up	46 3/4"
Length with rear seat down	72"
Overall width	49 1/2"
Height	34"
Rear door width	41 1/2"
Rear door height	30 3/4"
Volume with rear seat up	aprox. 40 cu.ft.
Volume with rear seat down	aprox. 65 cu.ft.